

Titan Spine's Proprietary Surface Technology

Interbody Devices that Participate in the Fusion Process

Titan Spine's proprietary surface technology has transformed the role of the interbody device – now, these implants actively participate in the fusion process. The unique combination of surface textures at the macro, micro and cellular levels support implant stability, and foster the ideal surface energy for osteoblast maturation and enhanced new bone growth, which may create the potential for a faster and more robust fusion.

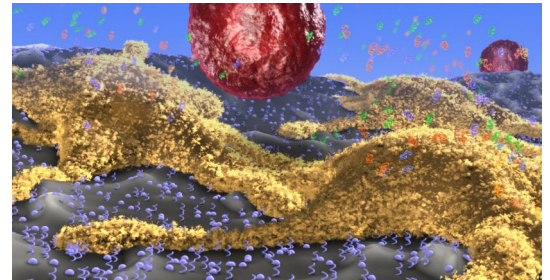
ENDOSKELETON® Interbody Cages

Titan Spine offers a full line of titanium ENDOSKELETON® interbody fusion devices featuring its proprietary surface technology, designed to:

- Promote bony ongrowth
- Optimize intervertebral stability
- Allow for increased bone graft material
- Permit excellent visualization and fusion assessment on postoperative CT and MRI scans
- Prompt the body to increase production of local BMP, eliminating the need for exogenous BMP
- Create the potential for a faster and more robust fusion



Endoskeleton® devices for ALIF, TLIF, PLIF, Oblique and Cervical procedures



Titan Spine's surface technology

To learn more, contact Titan Spine:

Toll Free: 1-866-822-7800
 Local: 1-262-242-7801
 productinfo@titanspine.com
 www.titanspine.com



140 N. Litchfield Road · Suite 110 · Goodyear, AZ 85338
 www.phxspine.com · p 602.256.2525 · f 602.256.0795